



MyID

Version 10.8 Update 2

Microsoft Azure
Integration Guide

Lutterworth Hall, St Mary's Road, Lutterworth, Leicestershire, LE17 4PS, UK
www.intercede.com | info@intercede.com | [@intercedemyid](https://twitter.com/intercedemyid) | +44 (0)1455 558111

Copyright

© 2001-2018 Intercede Limited. All rights reserved.

Information in this document is subject to change without notice. The software described in this document is furnished exclusively under a restricted license or non-disclosure agreement. Copies of software supplied by Intercede Limited may not be used resold or disclosed to third parties or used for any commercial purpose without written authorization from Intercede Limited and will perpetually remain the property of Intercede Limited. They may not be transferred to any computer without both a service contract for the use of the software on that computer being in existence and written authorization from Intercede Limited.

The software or web site referred to in this manual may utilize or contain material that is © 1994-2000 DUNDAS SOFTWARE LTD., all rights reserved.

No part of this publication may be reproduced, stored in a retrieval system or transmitted in any form or any means electronic or mechanical, including photocopying and recording for any purpose other than the purchaser's personal use without the written permission of Intercede Limited.

Whilst Intercede Limited has made every effort in the preparation of this manual to ensure the accuracy of the information, the information contained in this manual is delivered without warranty, either express or implied. Intercede Limited will not be held liable for any damages caused, or alleged to be caused, either directly or indirectly by this manual.

Licenses and Trademarks

The Intercede® and MyID® word marks and the MyID® logo are registered trademarks of Intercede in the UK, US and other countries.

Microsoft and Windows are registered trademarks of Microsoft Corporation. Other brands and their products are trademarks or registered trademarks of their respective holders and should be noted as such. All other trademarks acknowledged.

Conventions Used in this Document

- Lists:
 - ♦ Numbered lists are used to show the steps involved in completing a task when the order is important
 - ♦ Bulleted lists are used when the order is unimportant or to show alternatives
- **Bold** is used for menu items and for labels.
For example:
 - ♦ “Record a valid email address in **‘From’ email address**”
 - ♦ Select **Save** from the **File** menu
- *Italic* is used for emphasis and to indicate references to other sections within the current document:
For example:
 - ♦ “Copy the file *before* starting the installation”
 - ♦ “See *Issuing a Card* for further information”
- ***Bold and italic*** are used to identify the titles of other documents.
For example: “See the ***Release Notes*** for further information.”
Unless otherwise explicitly stated, all referenced documentation is available on the product CD.
- A `fixed width` font is used where the identification of spaces is important, including filenames, example SQL queries and any entries made directly into configuration files or the database.
- **Notes** are used to provide further information, including any prerequisites or configuration additional to the standard specifications.
For example:
Note: This issue only occurs if updating from a previous version.
- Warnings are used to indicate where failure to follow a particular instruction may result in either loss of data or the need to manually configure elements of the system.
For example:

Warning: You must take a backup of your database before making any changes to it.

Contents

1	Introduction.....	5
1.1	Supported configurations	5
1.1.1	Versions.....	5
1.1.2	Limitations.....	5
1.2	Change history.....	5
2	Prerequisites.....	6
3	Installing MyID	7
3.1	Configuring the MyID user accounts.....	7
3.2	Installing the database.....	7
4	Configuring MyID.....	9
4.1	Sending email.....	9
4.2	Changing the database username and password.....	9

1 Introduction

This document describes the additional configuration required to use MyID® with a Microsoft Azure database.

For information on general database configuration and setup, see the main [Installation and Configuration Guide](#).

1.1 Supported configurations

You can install MyID in the following configurations:

- MyID and SQL Server installed on local servers.
Microsoft Azure is not involved. See the [Installation and Configuration Guide](#).
- MyID and SQL Server installed on a Microsoft Azure VM.
Microsoft Azure SQL Database is not involved. This works in the same way as a locally-hosted MyID system. See the [Installation and Configuration Guide](#).
- MyID installed on a local server, using Microsoft Azure SQL as the database.
Follow the instructions in this document.
- MyID installed on a Microsoft Azure VM, using Microsoft Azure SQL as the database.
Follow the instructions in this document.

1.1.1 Versions

MyID has been tested on the following Microsoft Azure version:

- Microsoft SQL Azure (RTM) – 12.

1.1.2 Limitations

If you have MyID installed on a Microsoft Azure VM, it supports the following features:

- Connection to Microsoft Azure SQL database.
- Microsoft Active Directory and Certificates Services also hosted on servers within Azure.
Note: Azure Active Directory is not supported.
- HSM Connection to Thales nShield HSM.
- Locally generated Virtual Smart Cards (VSCs) using MyID Desktop and Self-Service App on Windows 8.1.

1.2 Change history

Version	Description
INT1872-01	First release
INT1872-02	Updated for MyID 10.8.
INT1872-03	Updated for MyID 10.8 Update 1.
INT1872-04	Updated for MyID 10.8 Update 2.

2 Prerequisites

The MyID Application server must have access to the Microsoft Azure database server. You must ensure that the Azure firewall settings allow access.

Note: For SQL Server, MyID requires that you install the Full Text Search option for the SQL Server Engine. This feature is built in to Microsoft Azure SQL database, so you do not need to configure it separately.

Before you begin the MyID installation, you must have:

- An already-created Microsoft Azure SQL database.

Note: You are recommended to create the database manually using Azure portal, PowerShell, or SQL Management Studio for the correct size of database to be configured. A minimum database size of S2 is recommended.

- A login to this already-created database that can create schema objects.

3 Installing MyID

3.1 Configuring the MyID user accounts

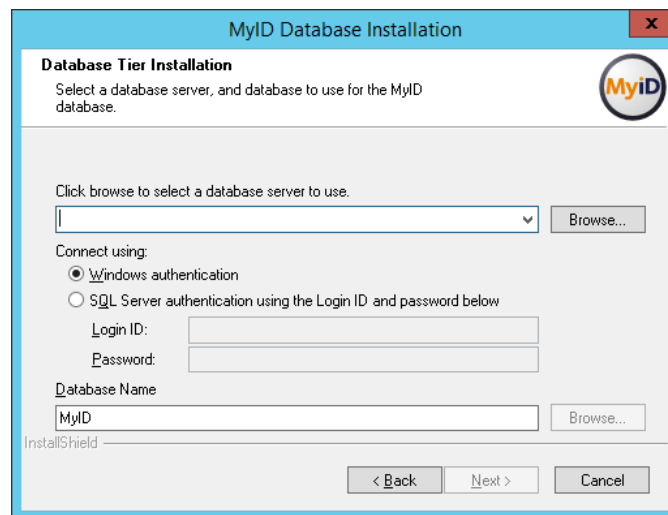
See the [Installation and Configuration Guide](#) for details of configuring the MyID user accounts. Unlike when using a SQL Server database, when using Microsoft Azure, note that you do not need to add the user accounts to the Distributed COM Users group on the database server.

3.2 Installing the database

During the MyID installation, you can specify the details of the Microsoft Azure database. You can run the installation from the MyID application server or from another PC that has SQL Server client tools and network access to the Microsoft Azure server.

On the Database Tier Installation screen:

1. Type the full server name of the Microsoft Azure server.



You cannot use the **Browse** button to select the server; you must type the name manually.

For example:

```
mydatabase.database.windows.net
```

2. Select the **SQL Server authentication** option.

You cannot use the **Windows authentication** option for a Microsoft Azure database.

3. Type the **Login ID** and **Password** for the database user.

This login ID is used by the installation program to create or update the database, and by the MyID application to access the database during operation.

This user must be able to create schema objects in the database.

4. Type the **Database Name**.

For example:

```
MyID
```

You must specify the name of an existing configured database. See section 2, [Prerequisites](#).

5. Click **Next** and complete the installation.

- **IKB-240 – GenMaster error after installing MyID in Azure**

The GenMaster utility is used to generate your installation Master Keys in the registry or in your HSM. After installing the MyID application server tier on Azure, the GenMaster utility will fail to authenticate to the MyID database, preventing MyID from operating correctly.

To resolve this issue:

1. Close GenMaster if it is currently open.

2. Navigate to:

```
C:\Program Files (x86)\Intercede\MyID\Components\Dal4Net\
```

3. Open `Dal4Net.dll.config` file in a text editor.

4. Remove the database name including the @ from the following node:

```
<Setting name = username><value>
```

For example:

```
<setting name="username">  
<value>USERNAME@MYID</value>  
</setting>
```

becomes:

```
<setting name="username">  
<value>USERNAME</value>  
</setting>
```

5. Save the file.

6. Run GenMaster from the Start menu.

4 Configuring MyID

4.1 Sending email

MyID does not support Database Mail using Microsoft Azure SQL database. To configure MyID to send email notifications, follow the instructions in the [Installation and Configuration Guide](#) for setting up an External System for an SMTP server.

4.2 Changing the database username and password

The database username and password are held in the `DAL4Net.dll.config` file on the application server in the following folder:

```
C:\Program Files (x86)\Intercede\MyID\Components\Dal4Net
```

The password value is encrypted so it is not possible to find the password by reading the file.

If you need to change the database username or password, you can edit this file and set the `value` entry to the correct username and password in clear text; for example:

```
<setting name="username"><value>new_username</value></setting>
<setting name="password"><value>new_password</value></setting>
```

The next time the MyID component accesses the file, the password will be encrypted.

You are recommended to open the saved file and search to confirm that the password does not appear in plain text.